

## **Sandbach Indoor Market Hall Redevelopment 2018 – Summary of Works**

### **Key Project Goals**

- Provide an attractive exterior that acts as a welcoming and appealing gateway to the town centre.
- Provide a comfortable and decoratively themed working space for stall holders.
- Provide efficient and attractive stall units
- Breathe life back into building, attracting new and diverse business whilst extending its opening hours and making it a place to visit.

### **Building Exterior**

- 1 Strip prepare and varnish doors
- 2 Fit clear glass to windows
- 3 Decorate rainwater goods
- 4 Decorate windows

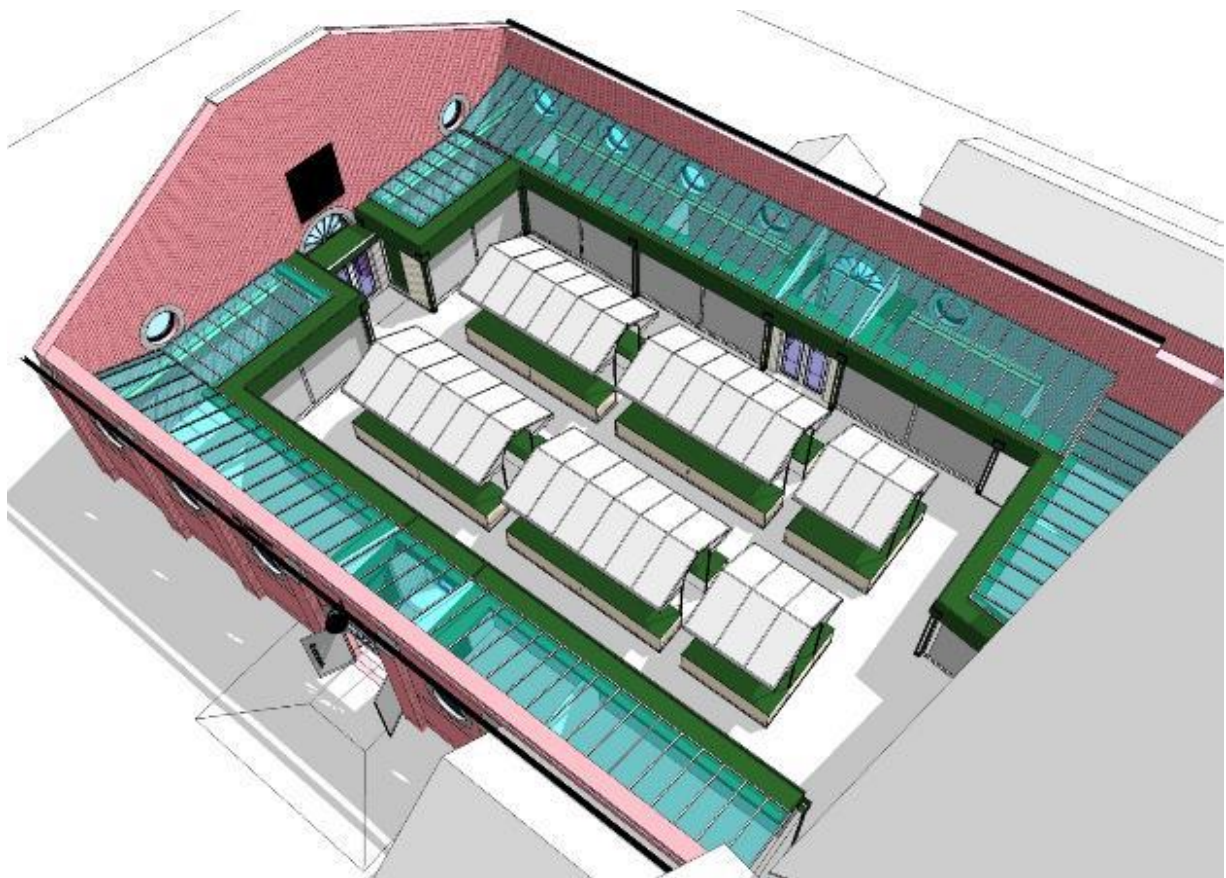


## **Building Interior**

- 1 Repair floor tiles
- 2 Replace wall tiles with timber cladding
- 3 Remove redundant lift
- 4 Construct new draught lobbies to 3 entrances
- 5 Install automatic hinged doors to lobbies
- 6 Internal decoration

## **Unit Roofs**

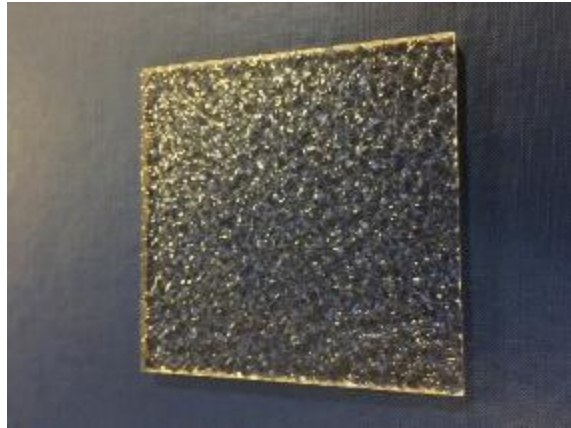
- 1 Remove existing fabric roofs
- 2 Install sloping polycarbonate roof to sides
- 3 Install flat polycarbonate roof to units at either end (Hidden from view)
- 4 Apply solar control film to new glazing
- 5 Seal exposed brickwork in Food Units



## **New Glazing**

Textured glass without wires

Black glazing bars



## **Automatic Doors**

Outward opening

Black Framing

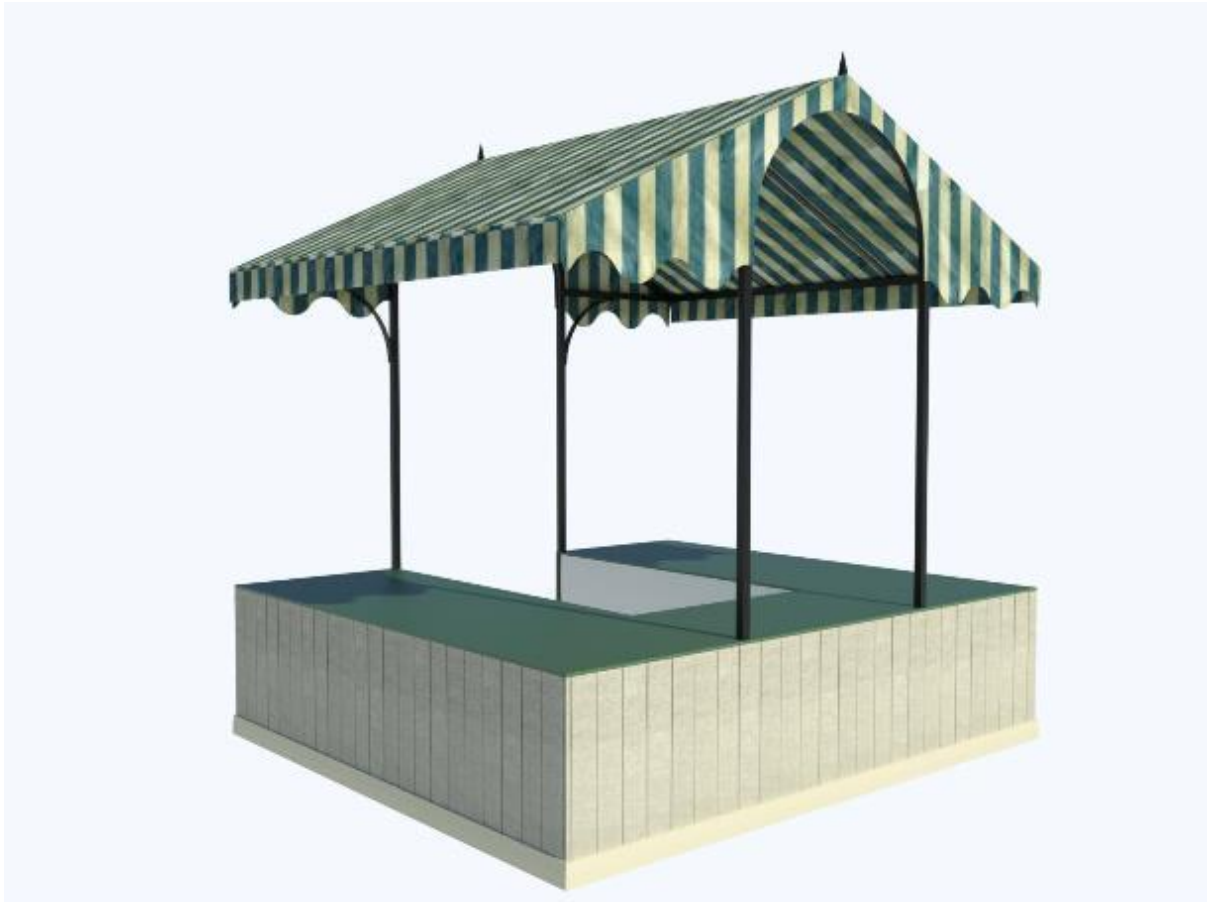
Inset glazing bars within double glazing

Sensors for automatic opening and closing



## Stalls

- 1 Replace sliding doors and tracks
- 2 Install vertical timber cladding and skirting to public faces
- 3 Sand worktops
- 4 Decorate



## Storage

- 1 Baby Change Room changed to Market Store
- 2 Fittings removed
- 3 New outward opening door installed
- 4 Two baby changing units fitted to ladies and disabled toilets.



## Lighting

- 1 Fit LED bulbs to existing internal lanterns
- 2 Illuminate sign with LED strip light
- 3 Illuminate interior roof with LED lighting on Unit Roofs
- 4 Fit LED strip light and spotlights to stalls
- 5 Provide emergency lighting
- 6 Install LED bulbs and emergency lights to external lights
- 7 Install multi-colour LED strip lights to windows with timer and sequence control

## Signage

- 1 Illuminated Stainless Steel letters externally
- 2 Signage on open face of external doors
- 3 Standard Unit Signage to perimeter
- 4 Vinyl graphics with images applied to shutters to Units



